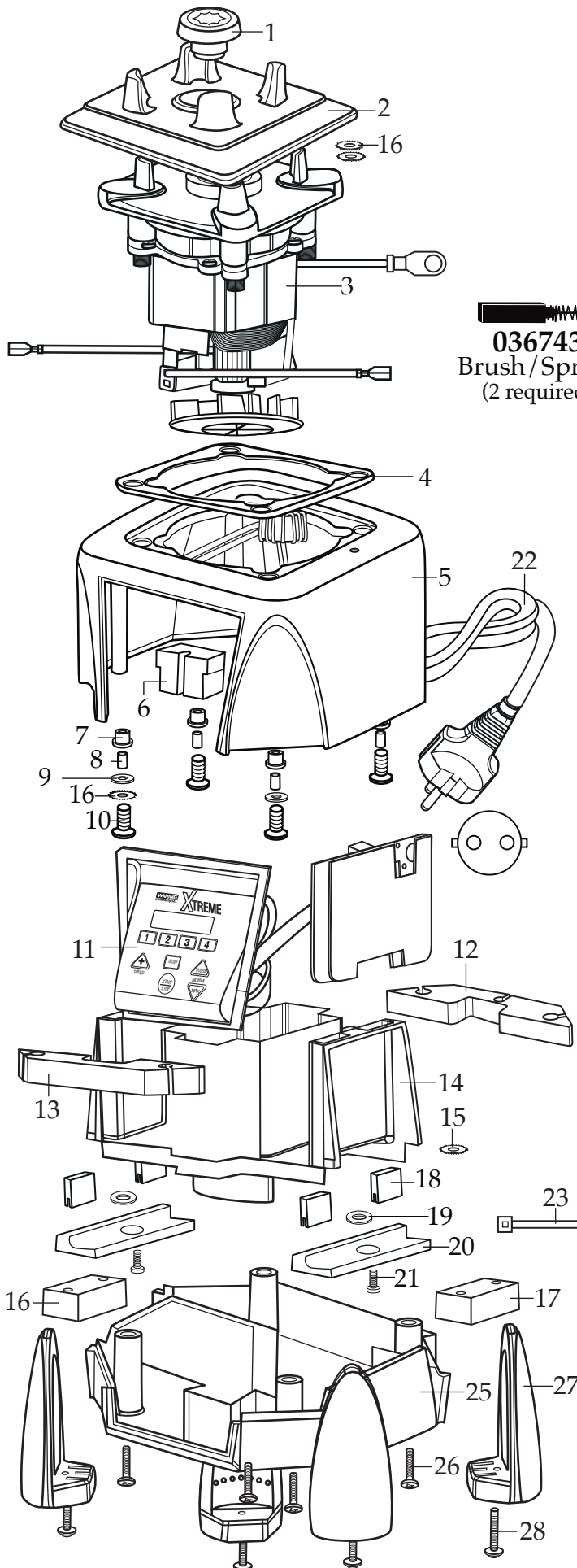





Europe Xtreme Blender Base Unit with
4 Reprogrammable Beverage Stations

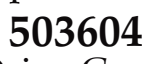
MX1500TXSEEBU





036743
Brush/Spring
(2 required)

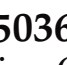

503580
Coupling Assembly


038243
Sq. Drive Adapter


503604
Sq. Drive Coupling
with Adapter 2 Gen.


037043
Sq. Drive Coupling


037041
Adapter


503601
Sq. Drive Coupling
with Adapter



← Date Code Location
YY|MM|DD
year|year|month|month|day|day

Illustration#	Part#	Description
1	503601 503604	Sq. Drive Coupling with Adapter <i>(on units after 3/29/2022)</i> Sq. Drive Coupling with Adapter 2 Gen.
2	026442	Jar Pad
3	035399	Leili Motor with Sensor
4	038278 026437	Dampening Plate Gasket <i>(on units after 8/25/2022)</i> Dampening Plate Gasket
5	503382-E-67	MX Housings with Ferrite Core & Cord
6	028541	Motor Foam (2 required)
7	026439	Dampening Plate Bushing (4 required)
8	038486 026453	Dampening Plate Sleeve (4 required <i>on units after 8/25/2022</i>) Dampening Plate Sleeve (4 required)
9	026459	Washer (2 required)
10	028929	Sems (4 required)
11	035710	Control Panel with Interlock <i>(comes with key board-main board-filter board)</i>
12	028248	Top Housing Foam Rear Baffle
13	028249	Top Housing Foam Front Baffle
14	<i>Motor Housing is Included with Illustration# 5</i>	
15	002943	Washer (3 required)
16	028247	Bottom Housing Foam Baffle
17	028542	Foam Baffle
18	034900	PCB Cushion (2 required)
19	037232	Neoprene Washer (2 required)
20	037007	PCB Mounting Bracket
21	013768	Screw (2 required)
22	<i>Cord is Included with Illustration# 5</i>	
23	013731	Cable Tie (3 required)
24	007556	Strain Relief
25	<i>Bottom Housing is Included with Illustration# 5</i>	
26	012505	Screw (4 required)
27	026430	Corner Post (4 required)
28	028928	Sems (4 required)

